



إيمى تىك ام اى بى ترىڊىنگ اند كونتراكىىنگ  
EMITECH MEP TRADING AND CONTRACTING

---

# PROFESSIONAL MEP CONTRACTOR

# INDEX



❖ <i>COMPANY PROFILE</i>	-	<i>SLIDE-03</i>
❖ <i>COMPANY OVERVIEW</i>	-	<i>SLIDE-04</i>
❖ <i>WORK STRATEGY</i>	-	<i>SLIDE-14</i>
❖ <i>PROJECTS – OVERVIEW</i>	-	<i>SLIDE-17</i>
❖ <i>OUR CLIENTS</i>	-	<i>SLIDE-32</i>
❖ <i>LIST OF PROJECTS</i>	-	<i>SLIDE-34</i>
❖ <i>CONTACT DETAILS</i>	-	<i>SLIDE-36</i>



# COMPANY PROFILE



EMITECH MEP





# 1. COMPANY OVERVIEW



**EMITECH** is a Multi-Million well financed company with various business sectors over MEP Projects. The company has experienced and skilled professional running the show.



**Emitech MEP Trading and Contracting WLL**, is focused in efficiently catering to the MEP needs of the customer. We have the Expertise, Infra- Structure, Work force and Capability to design, plan, procure, execute and commission large, medium and small MEP Projects for industrial, commercial and residential applications. We have the complete set up to meet the customer requirements in the field of Air-Conditioning, Ventilation, Air washer process cooling and Fire fighting applications.



# OUR **VISION** ...

Customer is our main focus and quality service is our competence. Our vision is to do business without boundaries and deliver high quality product and service to the customer with appropriate and best possible commercial value. Our business is based and containing the designed concept of long-term association with continued effort to improve the efficient accomplishment of the customer needs. We are firmly committed to the quality and paramount deliverance of the MEP products and services to the customer.





# What we **do**...



EMITECH MEP

We are focused to serve the customers in need of Air-Conditioning, Fire fighting, Ventilation, Air-Washer and Process cooling applications requirements. Our field of services is as mentioned below:

- ✓ Designing, Engineering, Planning and execution of Residential, Commercial & Industrial **Air Conditioning** projects involving **Chilled water systems** with flooded/DX chillers, also **DX system** of Air conditioning.





# What we **do**...

- ✓ Designing, Engineering, Planning and execution of **Ventilation systems** including kitchen hood works, Fresh Air Handling units and ventilation fans, Ecology unit installation, Basement & car park ventilation system & Normal ventilation system.



EMITECH MEP



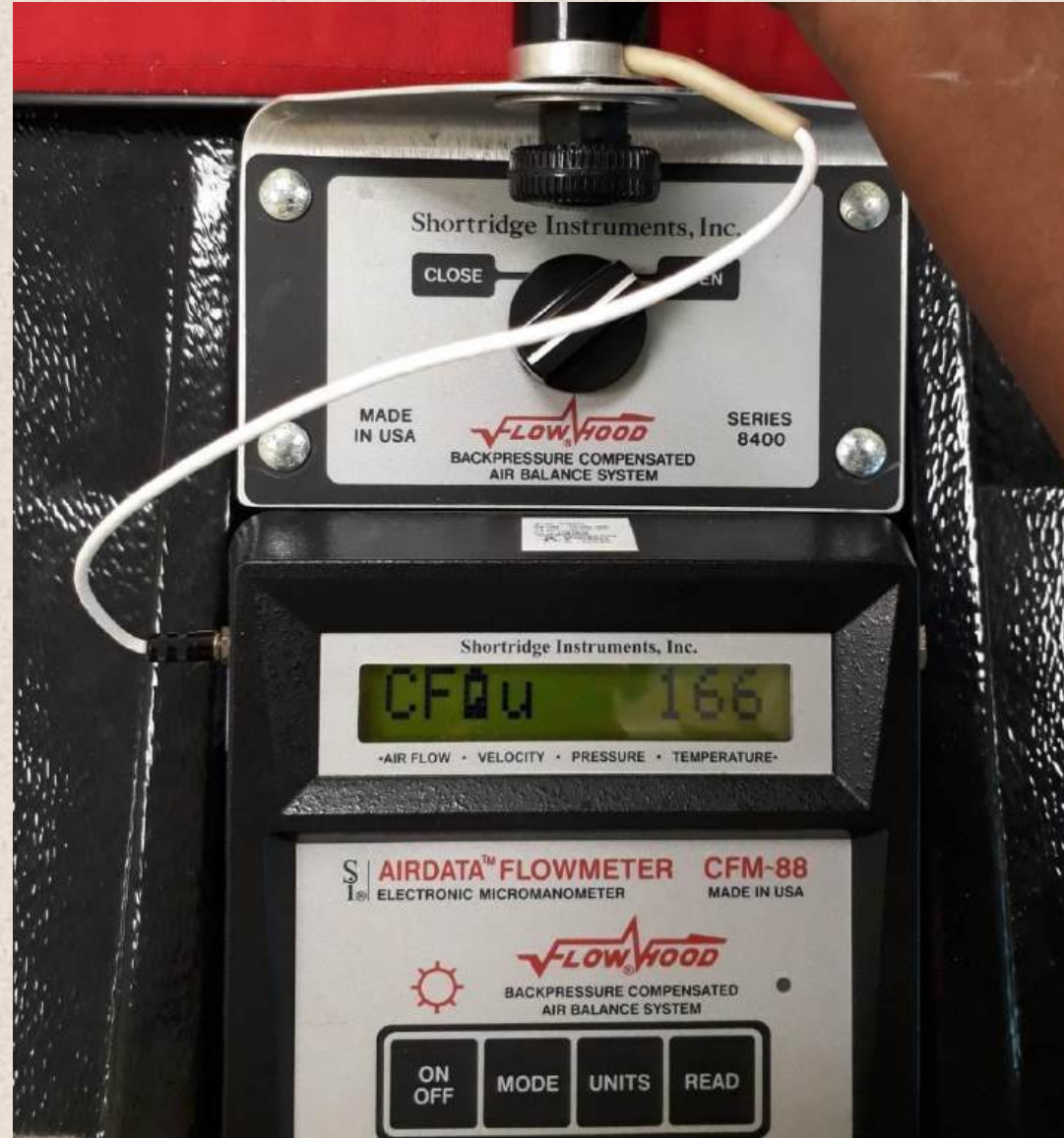


# What we do...

- ✓ Testing & Balancing of HVAC & Chilled water works



EMITECH MEP





# What we **do**...

- ✓ Designing, Engineering and execution of Residential, Commercial & Industrial **Fire Fighting system.**



EMITECH MEP





# What we **do**...

- ✓ Designing, Engineering and execution of **Electrical System**.
- ✓ Designing, Engineering and execution of **Fire Alarm System**.
- ✓ Designing, Engineering and execution of **CCTV, Data and Telephonic System**.





# What we **do**...

- ✓ Designing, Engineering and execution of **Plumbing System (Water Supply and Drainage System)**





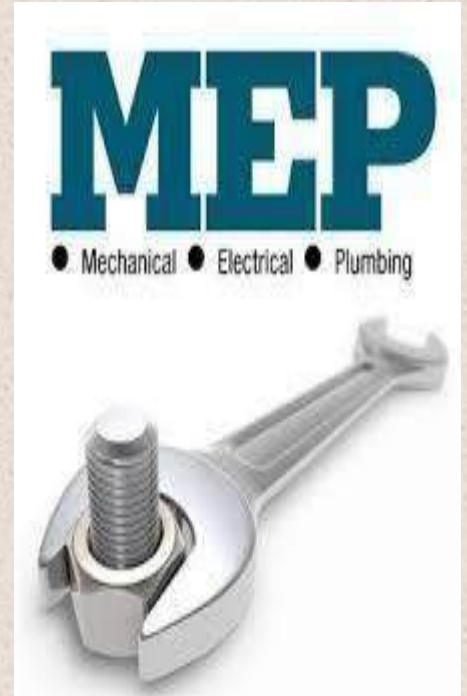
# MEP Solutions...



EMITECH MEP



- ✓ Central Plant System and DX System
- ✓ Primary / Secondary Pumping System
- ✓ Air cooled / Water Cooled Chillers
- ✓ Cooling Towers and Industrial cooling
- ✓ Ventilation & Kitchen hood system
- ✓ Fire Fighting & Fire suppression system
- ✓ Electrical system
- ✓ Data, CCTV, FA & PA System
- ✓ Plumbing system





## 2. WORK STRATGEY



# How we do...

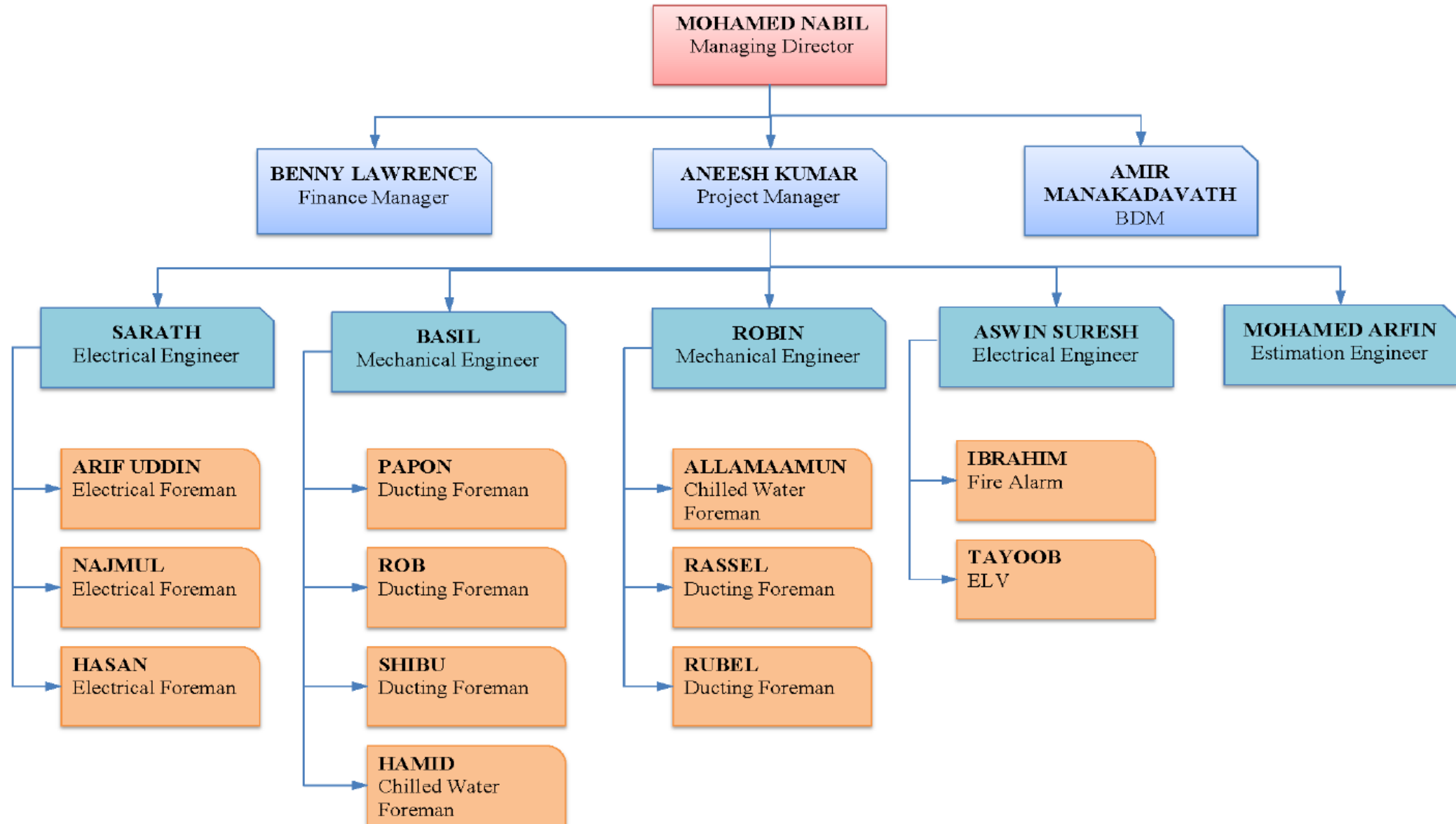


	Process	Documents
Job Transfer Drawing	Sales Dept. will transfer the Job to Projects Dept.	<ol style="list-style-type: none"> <li>1. Job Transfer</li> <li>2. Project Précis(time of completion)</li> <li>3. List of Approved Makes &amp; Vendors</li> <li>4. SPC sheet with SMR</li> <li>5. BOQ &amp; Costing</li> <li>6. P.O with Approved Drawings</li> </ol>
Planning & Scheduling	Projects Dept. will Establish team,visit site & meet customer	<ol style="list-style-type: none"> <li>1. Site Visit Report</li> <li>2. Material Request</li> <li>3. Quotation from Vendors</li> <li>4. P.O to Vendors</li> <li>5. Schedule</li> <li>6. PPC sheet with RSMR</li> </ol>
Supply of Materials	Materials will be procured & supplied as per schedule	<ol style="list-style-type: none"> <li>1. GRN by Project Engineer</li> <li>2. Delivery Chalang</li> <li>3. RA Billing</li> <li>4. Site Meetings</li> </ol>
Executing, Reporting & RA Billing	Based on site Condition work will be started, Progressed & Completed	<ol style="list-style-type: none"> <li>1. GRN by Project Engineer</li> <li>2. Project Progress Report</li> <li>3. Material Request</li> <li>4. RA Billing</li> <li>5. Site Meetings</li> <li>6. Measurements</li> <li>7. Vendor Bills</li> </ol>
Commissioning & Final Bill	Commissioning Process is initiated & Final measurements are taken	<ol style="list-style-type: none"> <li>1. Final Measurements</li> <li>2. Final Bill</li> <li>3. Commissioning Report</li> <li>4. Final Measurements for Vendors</li> <li>5. Vendor bill certification</li> </ol>
Documentation & Handing Over	Plant is Handed Over HO Document & As built Drawings prepared	<ol style="list-style-type: none"> <li>1. Final Bill</li> <li>2. Handing Over Documents</li> <li>3. As built Drawings</li> <li>4. Project Closure</li> <li>5. Vendor Bills finalization</li> </ol>
Project Closure & Analysis	Project Cost Analysis & Lessons lerned	<ol style="list-style-type: none"> <li>1. Final Cost Analysis</li> <li>2. Team Evaluation</li> </ol>



# EMITECH MEP TRADING & CONTRACTING COMPANY

## Organizational Chart





## **3. PROJECTS OVERVIEW**



## Projects...

**EMITECH** can take up MEP projects for Industries, Commercial complexes, Shopping Malls, IT Parks, Offices , Hotels Hospitals, Laboratories, Show rooms, Retail Outlets and Villas.

Emitech has an in-house design team which is suitably equipped with the latest CAD tools. The entire operations are fully computerized to cover the entire range of the operations from the Receipt of an order to After Sales Service.

We have a dedicated team for planning and procurement specifically meeting the requirements of each customer site. The team members monitor the supply is done as per schedule.

The execution team is in constant communication with the planning team for both supply and labor. Their increased need is assessed and projected well in advance to effect minimum lag time, and thereby benefitting the customer.





# COMPLETED Projects...



HVAC WORK – AMIRI ZEMS @VENDOME MALL



# COMPLETED Projects...



HVAC WORK – ALZAIN JEWELLERY @VENDOME MALL



# Completed **Projects...**



HVAC WORK – WAGAMAMA @VENDOME MALL



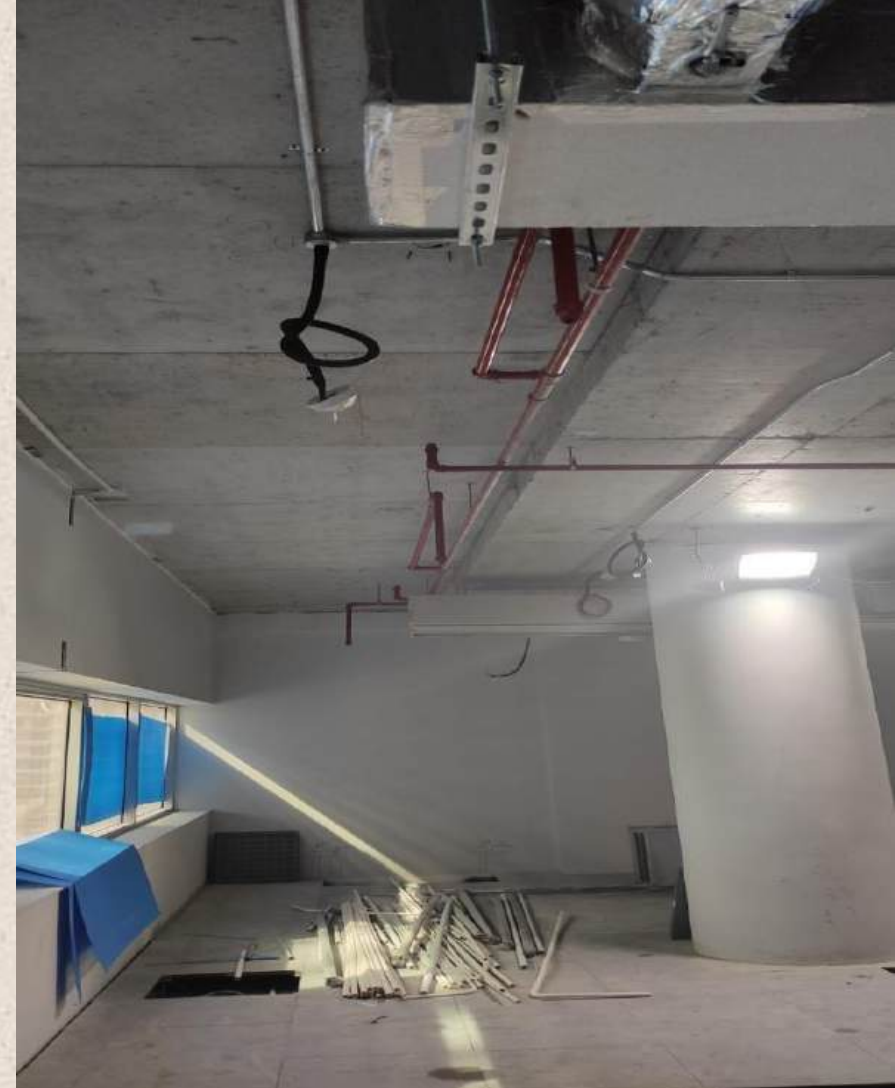
# Completed **Projects...**



HVAC WORK – MASSIMO DUTTY @VENDOME MALL



# Completed **Projects...**



MEP WORKS – DIOR OFFICE @LUSAIL Y TOWER



# Completed **Projects...**



**FIRE FIGHTING WORK – GAIT SHOWROOM @VENDOME MALL**



# Completed **Projects...**



**MEP WORKS – KALTHAM PAVILION @VENDOME MALL**



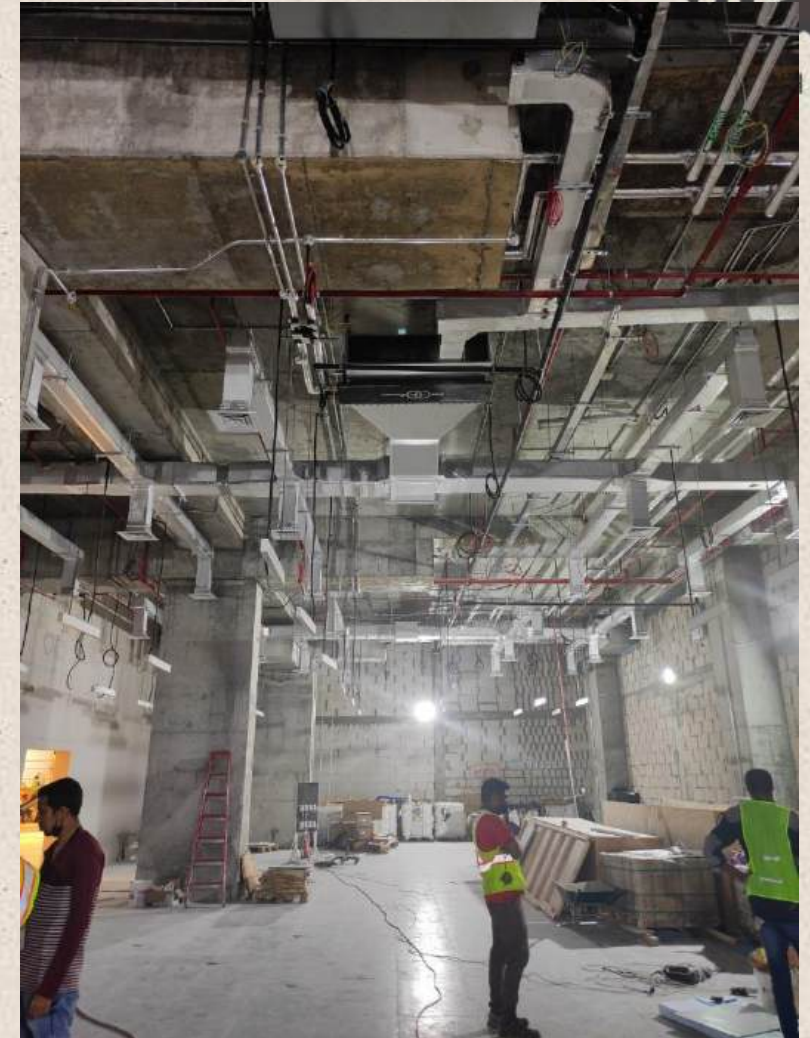
# Completed **Projects...**



**HVAC WORKS – WATER FACTORY @INDUSTRIAL AREA**



# Completed Projects...



MEP WORKS – ZARA SHOWROOM @VENDOME MALL



# Completed Projects...





# Completed **Projects...**



MEP WORKS – LILLY HOUSE CAFÉ @ALWAAB



# Completed **Projects...**



MEP WORKS – JOURY TRAVELS @LUSAIL COMMERCIAL BOULEVARD





# Completed **Projects...**



**DOHA CARE AMERICAN ARMY BASE -HVAC REPLACEMENT & DRAINAGE PIPING**





EMITECH MEP

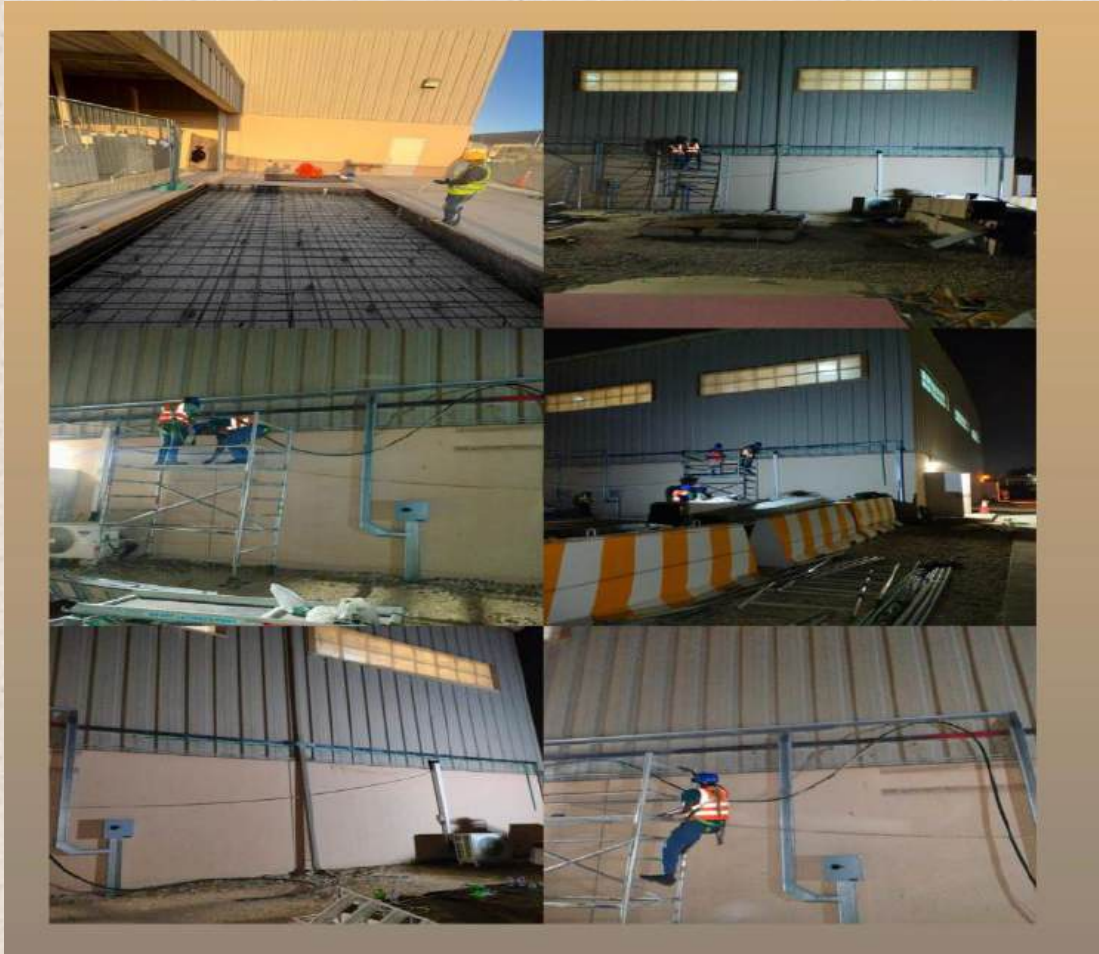
# Completed **Projects...**



**DOHA CARE AMERICAN ARMY BASE -LOADING DOCK CIVIL & MARKING WORKS**

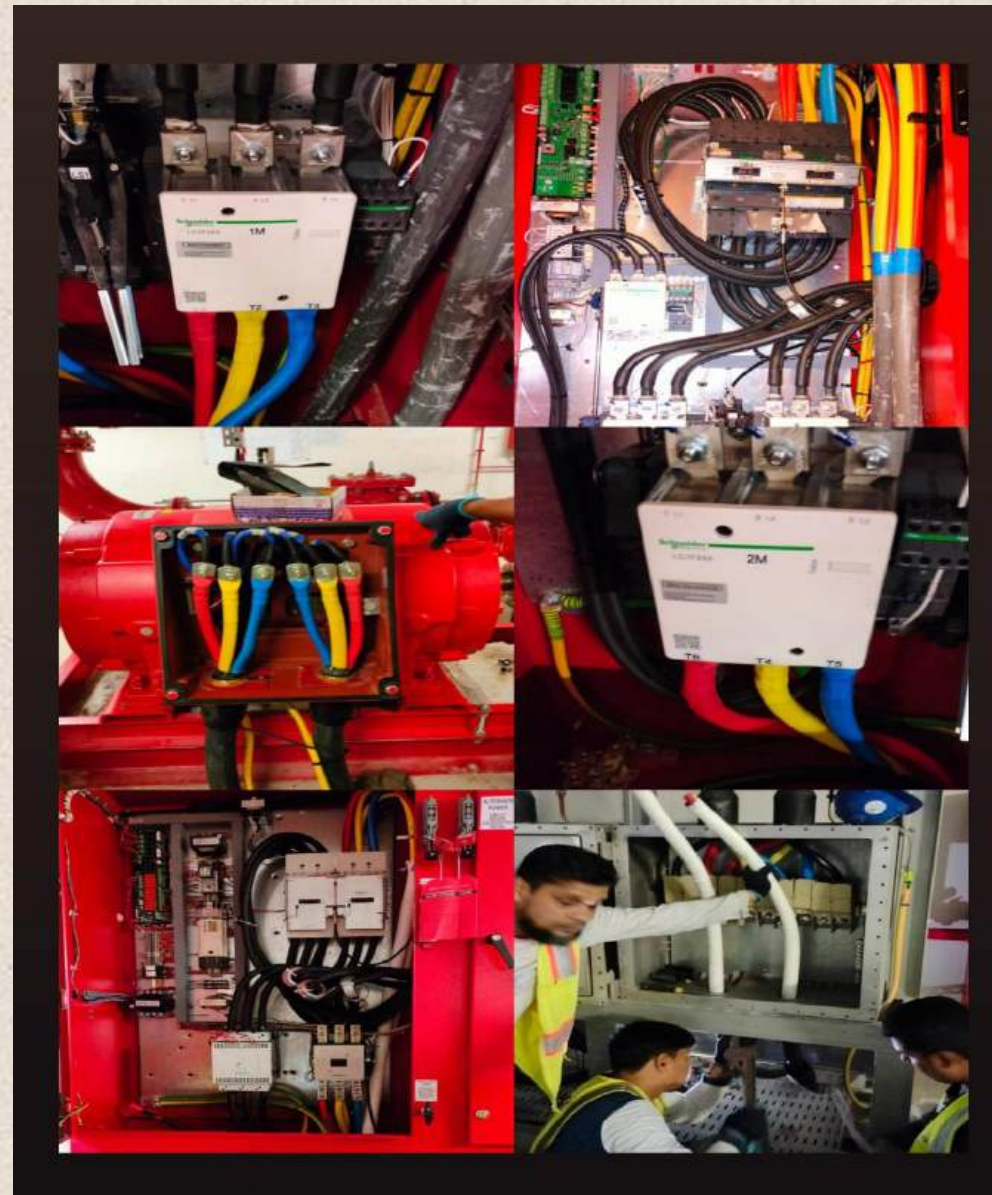
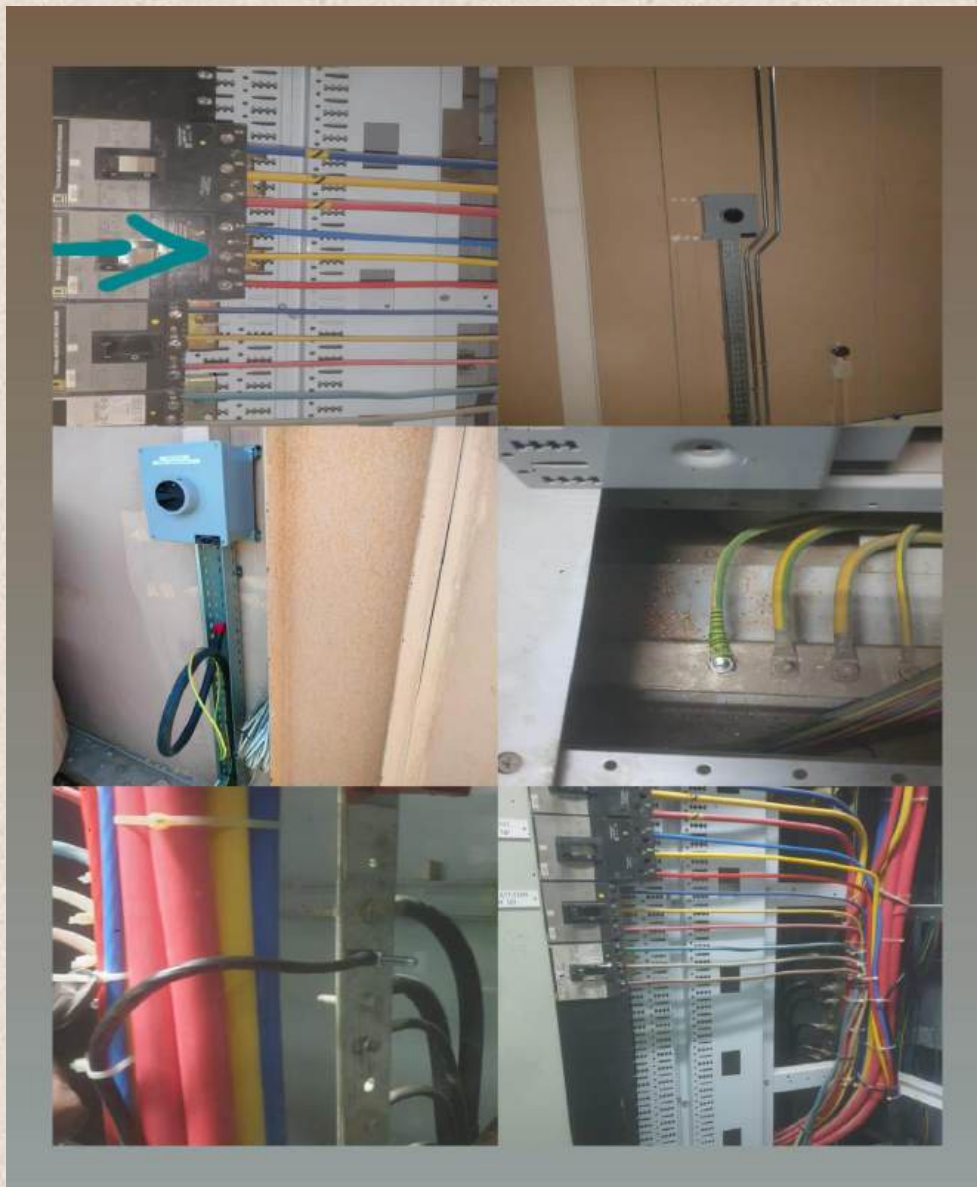


# Completed Projects...

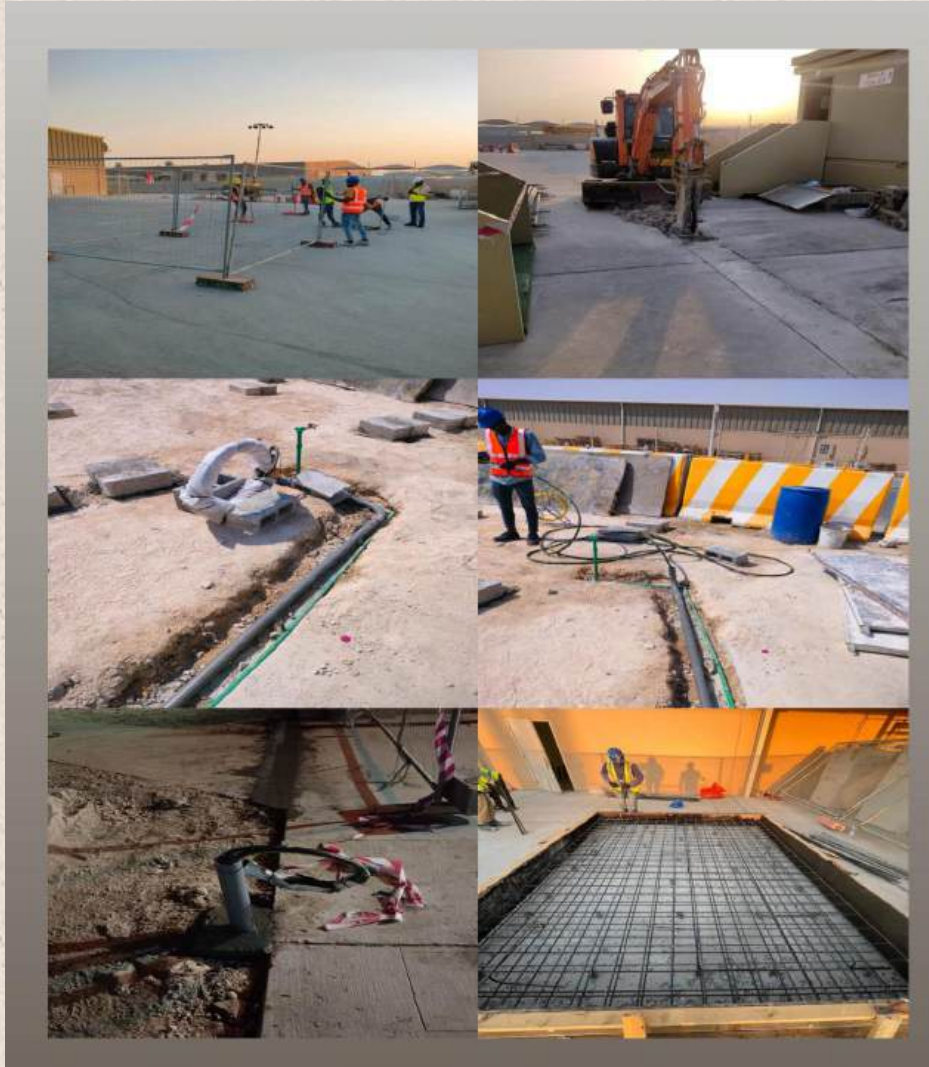


DOHA CARE @AMERICAN ARMY BASE- STRUCTURAL CABLING WORKS











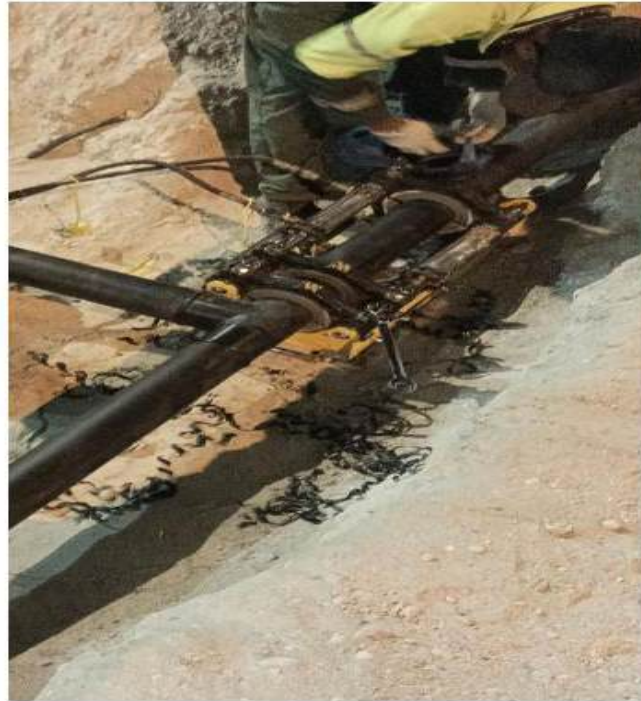
# Completed Projects...



**PUMP ROOM & ETS ROOM @ ISF DUHAIL**



# Completed **Projects...**



SEWAGE PIPING@ RAWDAT AL HAMAMA PARK



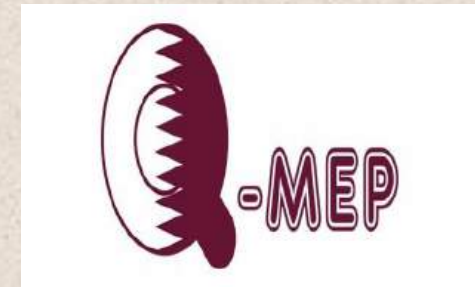
# Completed **Projects...**



FIRE FIGHTING WORKS WAREHOUSE @BIRKAT AL AWAMER



# OUR CLIENTS ...





## LIST OF PROJECTS...





EMITECH MEP

39

S. NO	PROJECT	LOCATION	SCOPE OF WORK	STATUS
1	AMIRI JEMS	VENDOME MALL	HVAC WORK	COMPLETED
2	ALZAIN JEWELLARY	VENDOME MALL	HVAC WORK	COMPLETED
3	2022 BUILDING	AZIZYA	FIRE FIGHTING WORK	COMPLETED
4	WAGAMAMA	VENDOME MALL	HVAC WORK	COMPLETED
5	MASSIMO DUTTY	VENDOME MALL	HVAC WORK	COMPLETED
6	KALTHAM PAVILION	VENDOME MALL	HVAC WORK	COMPLETED
7	AL SELHAM RESTAURANT	MHEIREB	HVAC WORK	COMPLETED
8	GAIT SHOWROOM	VENDOME MALL	FIRE SAFETY WORK	COMPLETED
9	DIOR OFFICE	LUSAIL	MEP WORK	COMPLETED
10	PRINCE GOLD	VENDOME MALL	MEP WORK	COMPLETED
11	ROYAL PALACE	VENDOME MALL	MEP WORK	COMPLETED
12	ZARA SHOWROOM	VENDOME MALL	MEP WORK	COMPLETED
13	SARAYI HOTEL	CORNICHE	CHILLER WORK	COMPLETED
14	QATAR NATIONAL MUSEUM		HVAC WORK	COMPLETED
15	WATER FACTORY	INDUSTRIA AREA	MEP WORK	COMPLETED
16	WABI SABI	ALWAAB	MEP WORK	COMPLETED
17	LILLY HOUSE CAFÉ	AL WAAB	MEP WORK	COMPLETED
18	I2 BUILDINGS	MSHEIREB DOWNTOWN	HVAC WORK	COMPLETED
19	JOURY TRAVELS, LUSAIL	COMMERCIAL BOULEVARD	MEP WORK	COMPLETED



S. NO	PROJECT	LOCATION	SCOPE OF WORK	STATUS
20	DOHA CARE	AMERICAN ARMY BASE	COMPLETE INSTALLATION OF NEW ABLUTION UNIT	COMPLETED
21	DOHA CARE	AMERICAN ARMY BASE	HVAC MODIFICATION, INSTALLATION, MECHANICAL & ELECTRICAL WORK	COMPLETED
22	DOHA CARE	AMERICAN ARMY BASE	RENNOVATION & MAINTENANCE OF RESIDENTIAL BUILDING	COMPLETED
23	DOHA CARE	AMERICAN ARMY BASE	PANEL INSTALLATION	COMPLETED
24	DOHA CARE	AMERICAN ARMY BASE	LOADING DOCK RECONFIGURATION	COMPLETED
25	LUSAIL AL YASMEEN	LUSAIL CITY	INSTALLATION OF ALUMINUM & GLASS	ONGOING



## CONTACT DETAILS...

**EMITECH MEP TRADING & CONTRACTING WLL ,  
Zone 25, Street 850, Building Number: 94  
2<sup>ND</sup> Floor office No: 6 Al Mansoura  
P.O.Box: 5387 Doha, QATAR..  
Ph.no: +974 7004 7042**